

NexLog[®]

Express Recording Solutions

EXP SERIES



NexLog EXP

For organizations that need eight or fewer audio inputs recorded, Eventide offers the NexLog EXP recorder. This compact recorder is designed to record analog, digital, and VoIP audio inputs from telephone systems, SIP-based intercom systems, radio consoles, and IP-based DMR and NXDN radio systems.

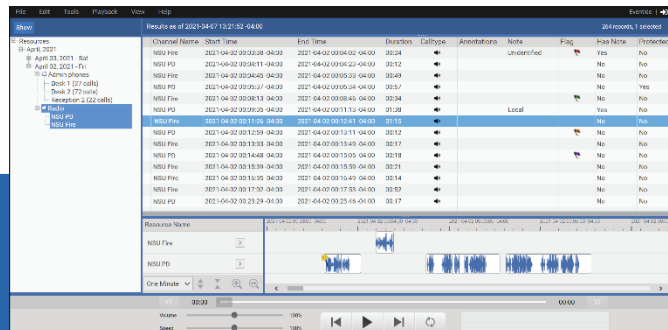
Police and fire departments, schools, campus security, hospitals, and theme parks will benefit from this affordable recording solution that offers the same secure, reliable support as Eventide's NexLog DX-Series.

Management and Monitoring

The NexLog EXP recorder includes a standard web-based Interface for configuration, administration, and monitoring.

Simple Browser Based User Access

The NexLog EXP recorder supports HTML5 user access from any browser with network connectivity to the recorder's IP address or URL. The NexLog EXP recorder includes Eventide's MediaWorks EXP software for intuitive Browsing, Replay and Export of recordings.



Available Enhanced Set of Replay Tools

Upgrade to the optional MediaWorks Enhanced version and gain a full suite of replay tools, including Text/Voice Annotation, Audio Redaction, Incident Management, seven ways of sharing recordings, Metadata search and more. Add the optional MediaWorks Mobile software option for smartphone access to recordings.

Eventide[®]

Communications



Hardware/Software Profile

Self-contained Linux-based 1U rack-mountable appliances with Dual SSD's (RAID1 mirroring) for storage integrity. Based on the highly reliable enterprise recording software for which Eventide is well known.

Software Update Subscription (EXPSUS)

The first 12-month period of EXPSUS coverage is included with purchase of a NexLog EXP recorder. Purchase additional 2-month periods of DXSUS coverage for ongoing assured security, reliability, and supportability.

Automatic Archiving

Each NexLog EXP recorder includes an Archiving license to continuously transfer recordings to one external USB Hard Drive or USB Thumb Drive, or to one Network Attached Storage (NAS) device.

VoIP, IP Dispatch and IP Radio Support

The NexLog EXP recorder supports recording via the following VoIP methods: Passive SPAN of SIP, H.323 or Cisco SCCP, and termination of SIP end point, Cisco BiB or Mitel SRC. The NexLog EXP recorder can optionally record MOTOTRBO Controllerless systems via NAI-V, Tait DMR Tier 2 and Tier 3, Kenwood NexEdge trunked, SmartPTT, Telex 223/224, TRBOnet and RadioPRO consoles.

Specification Summary

- 1U, short depth, rack or shelf mountable
- Dimensions: 14.5" (D) x 19" (W) x 1.7" (H)
- One PCIe slot for analog or digital PBX recording card
- Intel 4-core CPU
- Dual Solid-State Drives (RAID-1 mirrored)
- Over 80,000 hours of voice recording storage
- Dual 10/100/1000 Ethernet LAN ports
- Power Supply: 100/240VAC, 50/60Hz, 3/1.5A Max.

Configuration Information

| | |
|---|---------------------|
| EXP Base unit with 1 card slot | Part No. NexLogEXP |
| Channel Licenses (Max. 8 Channels per system) | |
| • 1 VoIP channel license | Part No. EXP801V |
| • 1 Analog channel license | Part No. EXP801A |
| • 1 Digital PBX channel license | Part No. EXP801D |
| Recording Interface PCIe Cards (Max. 1 card per system) | |
| • 8 Channel Analog card | Part No. EXPANA8 |
| • 8 Channel Digital PBX card | Part No. EXPPBX8 |
| MediaWorks Enhanced option | Part No. EXPUI8 |
| Decoder (TRBO, DMR, NXDN) | Part No. 324720 |
| Rack Mounting Rails | Part No. 324957 |
| Connect Kit (for card) | Part No. 109003-003 |

Learn more at eventidecommunications.com/nexlog-exp

Eventide[®]
Communications

Tel: +1 (201) 641-1200
Fax: +1 (201) 641-1640
Loggers@EventideCommunications.com
1 Alsan Way, Little Ferry, NJ 07643 USA